



### Headline Statistics

WCWSS DAM STORAGE  
(%)

91.7

WEEKLY DAM LEVEL CHANGE  
(%)

-0.40

AVERAGE TOTAL  
DAILY WATER USE  
(MLD)

870

### Water Resource Status

WATER RESOURCE STATUS	MEANING OF CURRENT STATUS
Wise Water Use	<p>'Continued water wise use encouraged as City reviews marginally lower seasonal rainfall volumes, cautioning possible early drought cycle'</p> <p>The City is currently reviewing the water resource status due to lower than normal rainfall in the catchment areas resulting in marginally lower than expected dam levels (as shown on Page 3).</p> <p>There is no immediate reason for concern and no expected restrictions for the next year. The different drought risk levels are discussed in the Water Outlook 2022.</p>

### Water Production from Different Sources

MAJOR DAMS  
(MLD)

856

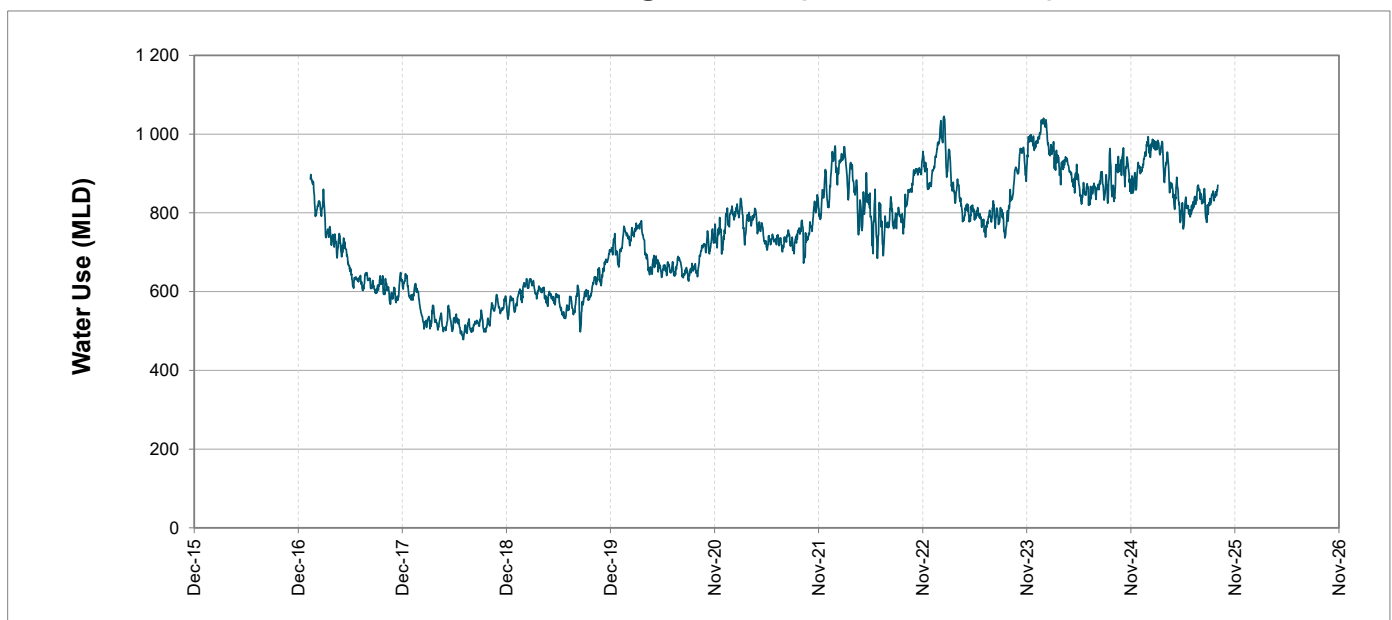
MINOR DAMS  
(MLD)

8

GROUND WATER  
AND SPRINGS  
(MLD)

6

### Overall Water Usage Trend (2010 - Present)



WCWSS means Western Cape Water Supply System

MLD means million litres per day

More information on Water Saving and Restrictions is available on the City of Cape Town's 'ThinkWater' website

Water Stored in Major Dams (WCWSS)

Overall Percentage Full

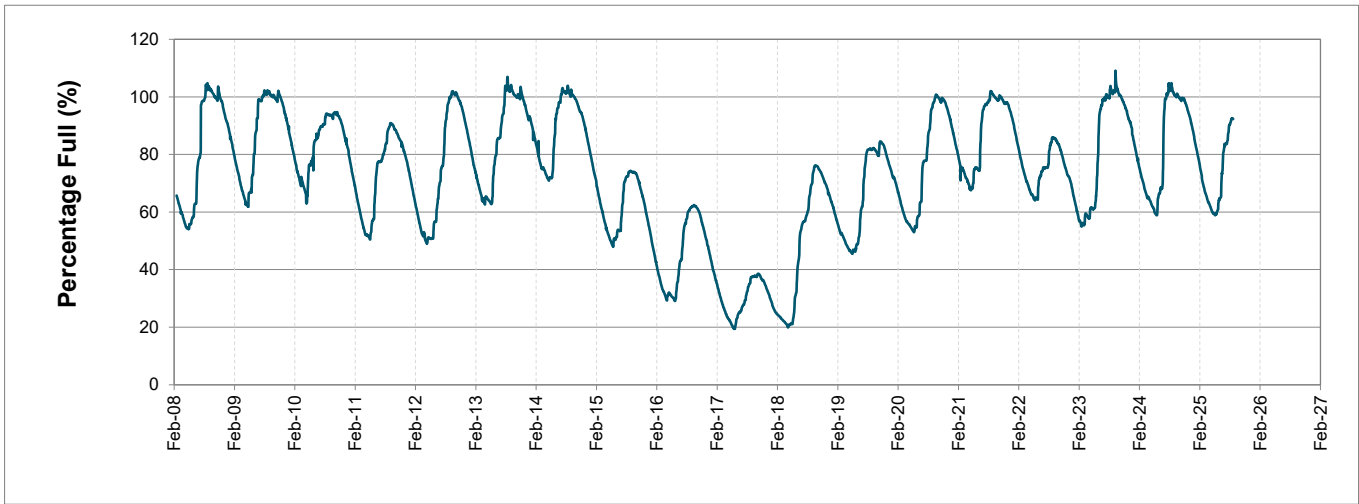
91.7%

Weekly Change

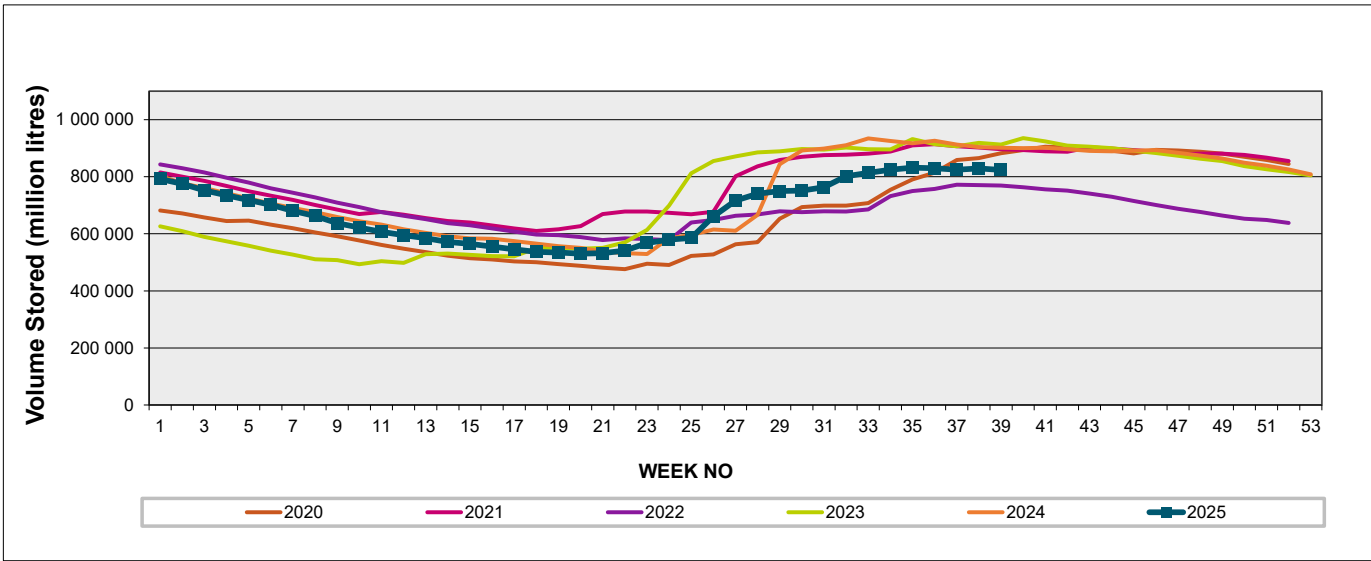
-0.4%

MAJOR DAMS (WCWSS)	STORAGE						
	CAPACITY	%	%	%	%	%	%
	MI	01 October 2025	Previous week	2024	2023	2022	2021
BERG RIVER	130 010	99.8	100.1	101.1	101.0	99.7	99.9
STEENBRAS LOWER	33 517	97.3	97.9	99.2	102.2	93.1	97.5
STEENBRAS UPPER	31 767	100.1	101.8	100.8	103.6	91.3	97.4
THEEWATERSKLOOF	480 188	85.4	85.9	102.2	106.6	84.2	99.9
VOËLVLEI	164 095	102.1	101.9	98.8	101.5	72.2	99.5
WEMMERSHOEK	58 644	87.7	89.3	99.9	100.1	87.8	98.2
TOTAL STORED	898 221	823 298	827 463	908 279	935 387	764 056	894 076
% STORAGE		91.7%	92.1%	101.1%	104.1%	85.1%	99.5%

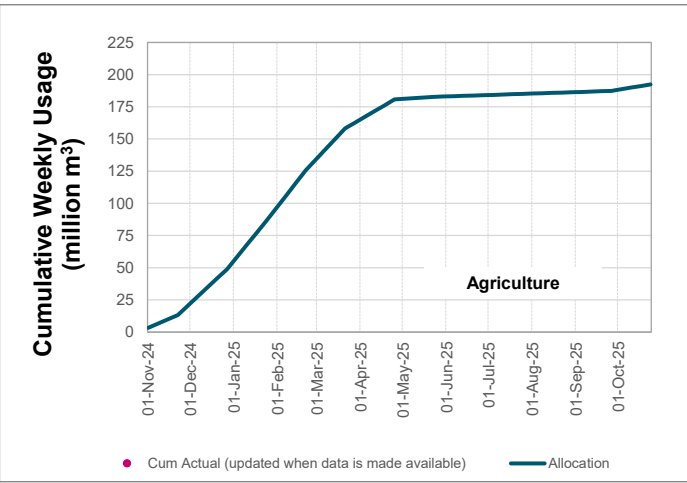
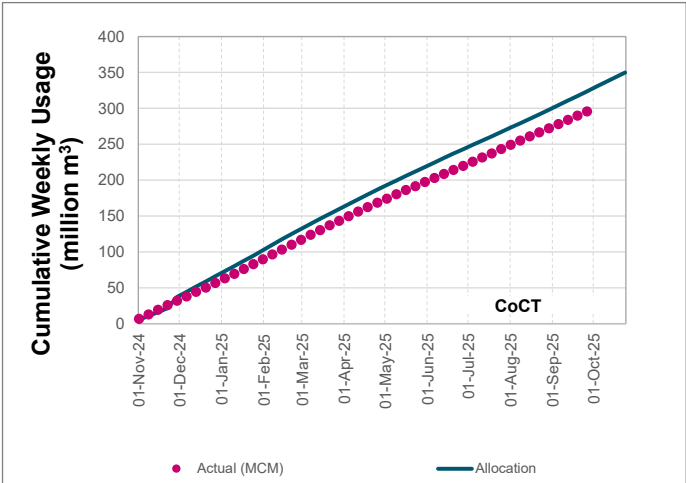
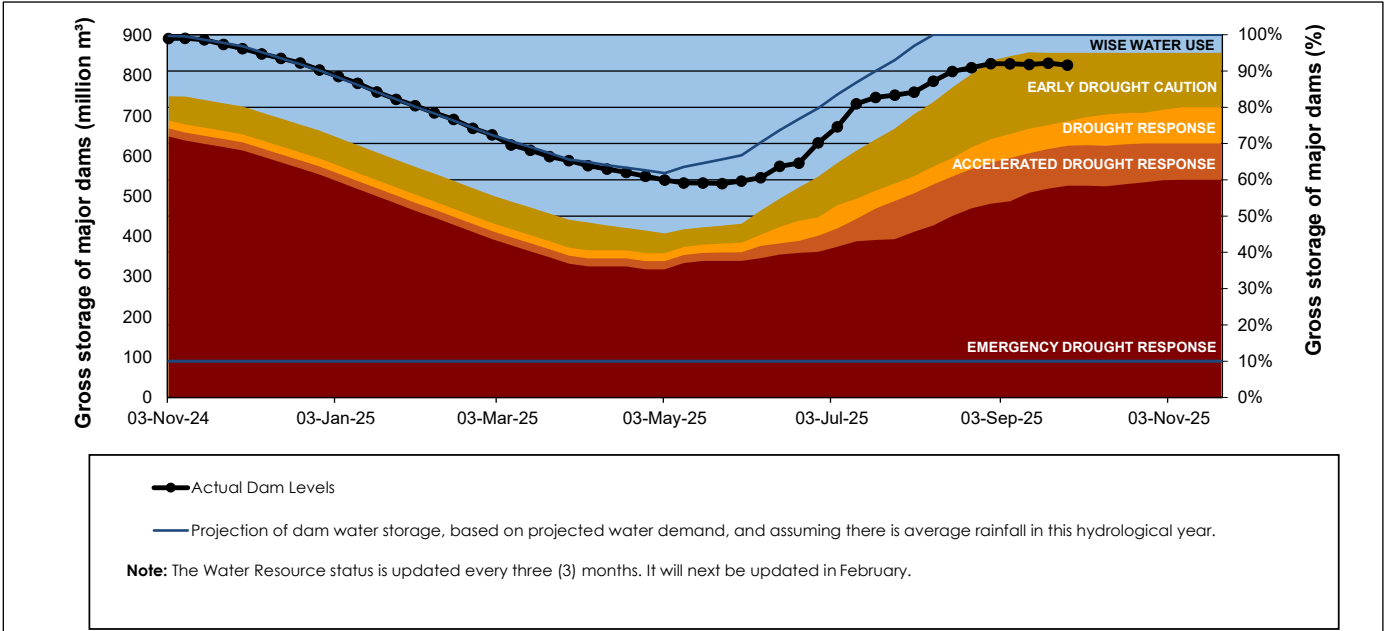
WCWSS Storage Record (2008 - Present)



WCWSS Comparative Storage Graph



Projected WCWSS Dam Storage Levels



Water Stored in Minor Dams

Overall Percentage Full	77.3	Weekly Change	-1.80
-------------------------	------	---------------	-------

MINOR DAMS	STORAGE						
	CAPACITY	%	%	%	%	%	%
	MI	01 October 2025	Previous week	2024	2023	2022	2021
ALEXANDRA (Table Mountain)	126	66.6	70.5	87.5	100.0	86.5	68.4
DE VILLIERS (Table Mountain)	243	85.7	88.8	100.5	100.5	79.8	94.8
HELY-HUTCHINSON (Table Mount)	925	99.5	99.8	100.3	102.0	99.3	99.7
KLEINPLAATS (Simon's Town)	1 368	60.3	66.8	63.5	100.2	75.5	100.0
LAND-EN-ZEEZICHT (Helderberg)	451	100.0	100.0	100.0	99.4	87.7	100.0
LEWIS GAY (Simon's Town)	182	90.9	86.5	100.9	100.9	35.5	100.9
VICTORIA (Table Mountain)	128	67.3	68.5	100.4	101.2	99.3	100.4
WOODHEAD (Table Mountain)	954	69.9	68.2	71.1	97.7	65.6	77.9
Total Stored	4 377	3381.4	3460.1	3565.2	4327.4	3438.3	4059.0
Percentages stored		77.3	79.1	81.5	98.9	78.6	92.7

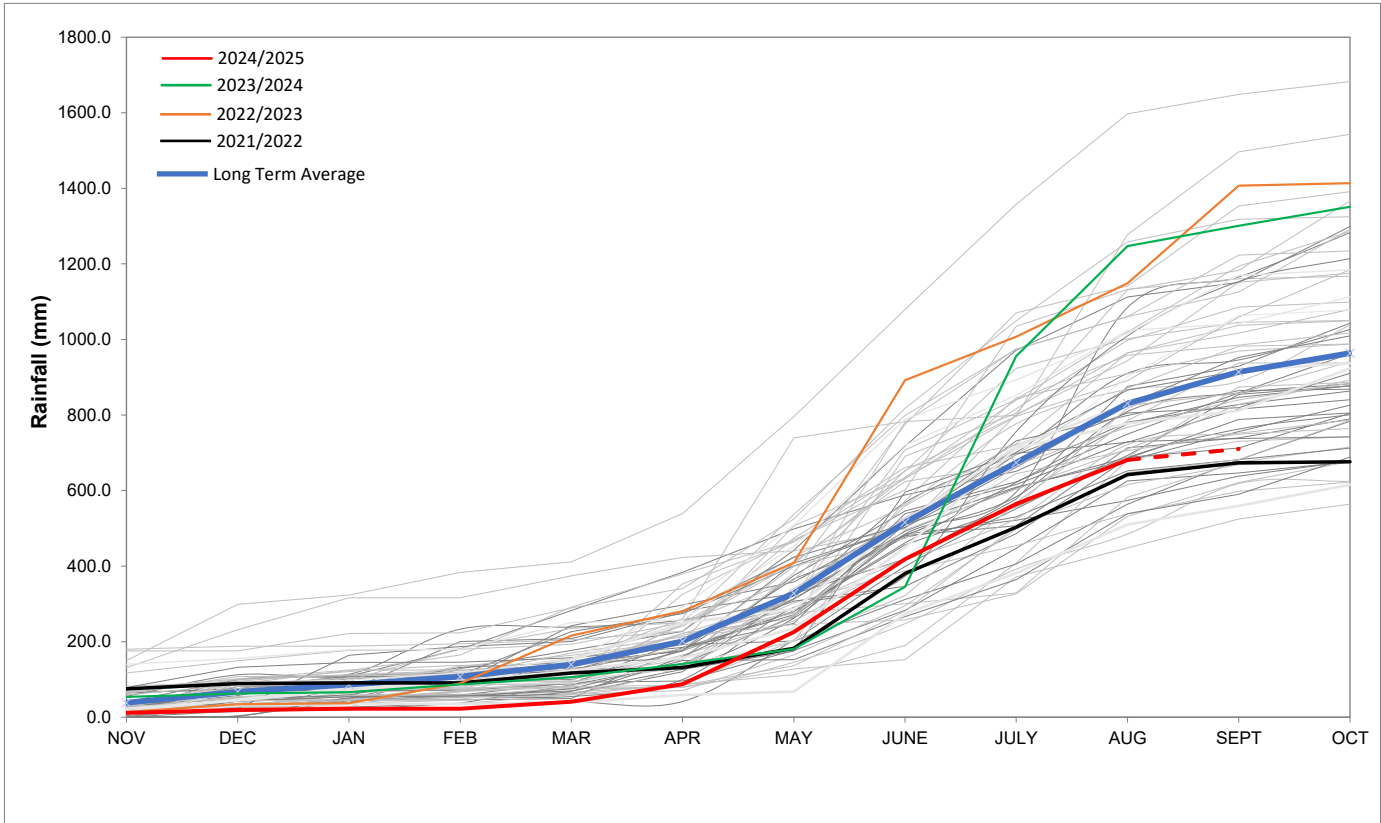
# Rainfall Recorded

RAINFALL (mm)	24-Sept	25-Sept	26-Sept	27-Sept	28-Sept	29-Sept	30-Sept	Oct	
								Total*	LT Average
Blackheath Upper	0.0	0.0	0.0	0.0	0.0	0.0	0.0	0.0	26.8
Brooklands	0.0	0.0	0.0	0.0	0.0	0.0	0.0	0.0	47.7
Newlands	0.0	0.0	0.0	0.0	0.0	0.0	0.0	0.0	72.2
Steenbras	0.0	0.0	0.0	0.0	0.0	0.0	0.0	0.0	55.4
Table Mountain (Woodhead)	0.0	0.0	0.0	0.0	0.0	0.0	0.0	0.0	83.7
Theewaterskloof	0.0	0.0	0.0	0.0	5.0	0.0	0.0	0.0	44.1
Tygerberg	0.0	0.0	0.0	0.0	0.0	0.0	0.0	0.0	28.9
Voëlvlei	0.0	0.0	0.0	0.0	0.0	0.0	0.0	0.0	26.7
Wemmershoek	0.0	0.0	0.0	0.0	0.0	0.0	0.0	0.0	43.0
Wynberg	0.0	0.0	0.0	0.0	0.0	0.0	0.0	0.0	51.1

Notes: \*Total/cummulative rainfall for month indicated above  
LT: Long Term

# Accumulated Monthly Rainfall at Wemmershoek

Note: Wemmershoek station used due to long record and mountainous location



## Drinking Water Quality

SAMPLE PASS RATE		
Month	Water Quality Compliance (%)	Target (%)
Nov-21	99.11	98
Dec-21	99.09	98
Jan-22	99.04	98
Feb-22	99.04	98
Mar-22	98.99	98
Apr-22	98.96	98
May-22	98.90	98
Jun-22	98.96	98
Jul-22	99.46	99
Aug-22	99.47	99
Sept-22	99.46	99.00
Oct-22	99.47	99.00
Nov-22	99.45	99.00
Dec-22	99.36	99.00
Jan-23	99.36	99.00
Feb-23	99.35	99.00
Mar-23	99.29	99.00
Apr-23	99.24	99.00
May-23	99.24	99.00
Jun-23	99.18	99.00
Jul-23	99.19	99.00
Aug-23	99.14	99.00
Sept-23	99.10	99.00
Oct-23	99.10	99.00
Nov-23	99.04	99.00
Dec-23	99.15	99.00
Jan-24	99.16	99.00
Feb-24	99.12	99.00
Mar-24	99.16	99.00
Apr-24	99.20	99.00
May-24	99.21	99.00
Jun-24	99.26	99.00
Jul-24	99.27	99.00
Aug-24	99.31	99.00
Sept-24	99.33	99.00
Oct-24	99.37	99.00
Nov-24	99.42	99.00
Dec-24	99.42	99.00
Jan-25	99.48	99.00
Feb-25	99.57	99.00
Mar-25	99.61	99.00
Apr-25	99.65	99.00
May-25	99.66	99.00
Jun-25	99.62	99.00
Jul-25	99.69	99.00
Aug-25	99.69	99.00

This table shows CCT drinking water quality compliance according to the South African National Standard 241:2015. Compliance, measured against all prescribed chemical and microbiological components, consistently exceeds the very high CCT target of 99%. (Overall compliance percentages of continuous sampling and analysis are released on a monthly basis.